



SUPERIOR

H O M E S

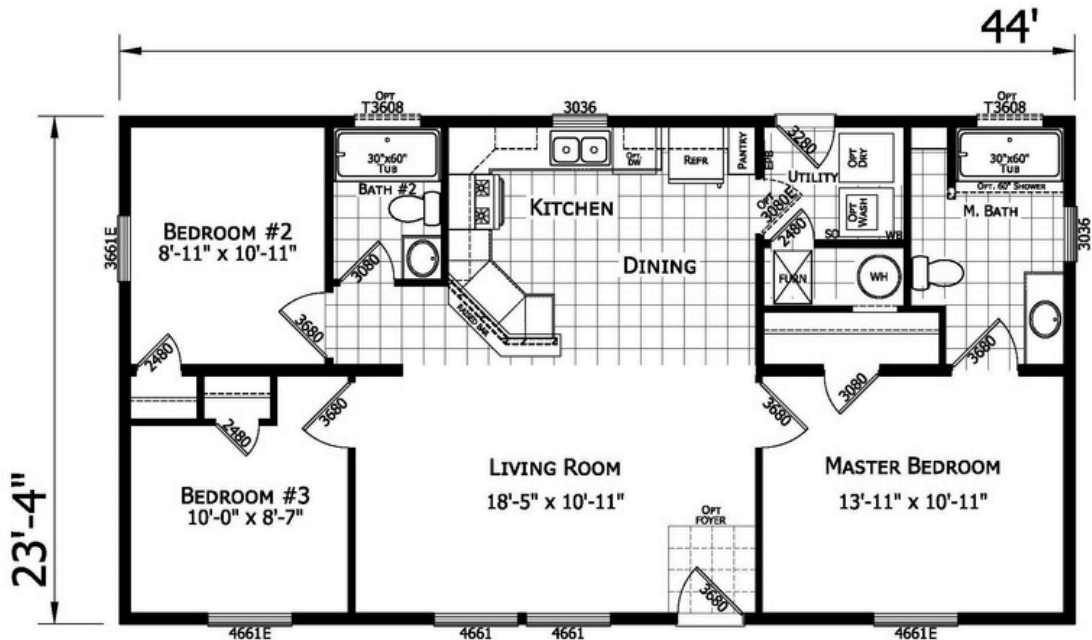


Multi Section Floor Plans

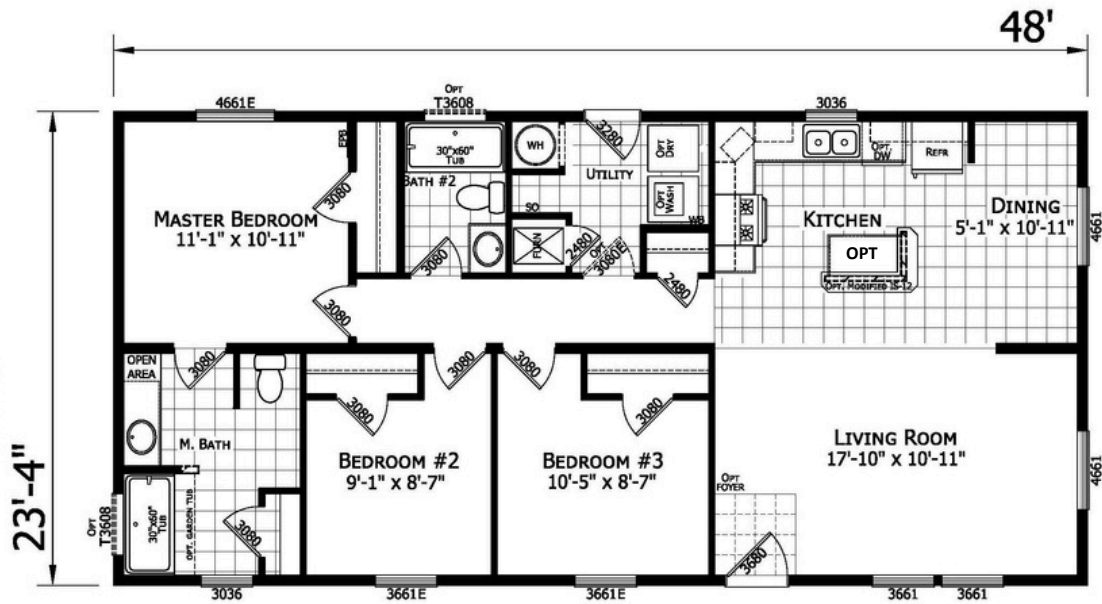
B23602 | 2 Bed-2 Bath 840 Sq. Ft.



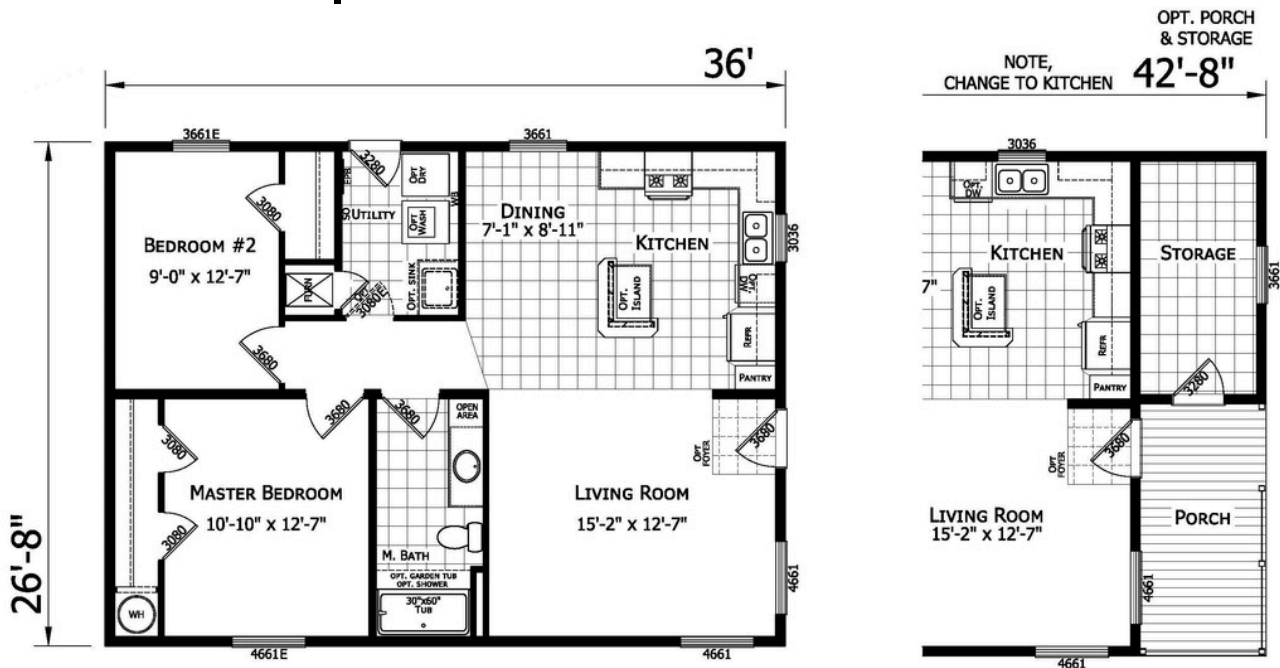
B24401 | 3 Bed-2 Bath 1027 Sq. Ft.
Display Home - Kinzers PA



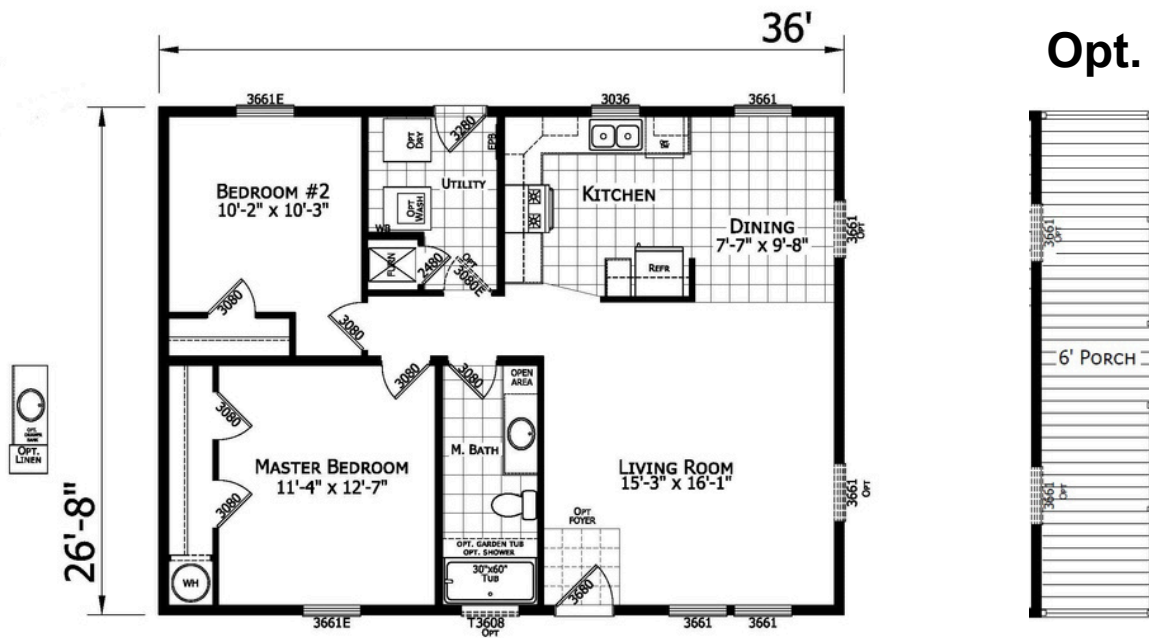
B24802 | 3 Bed-2 Bath 1120 Sq. Ft.



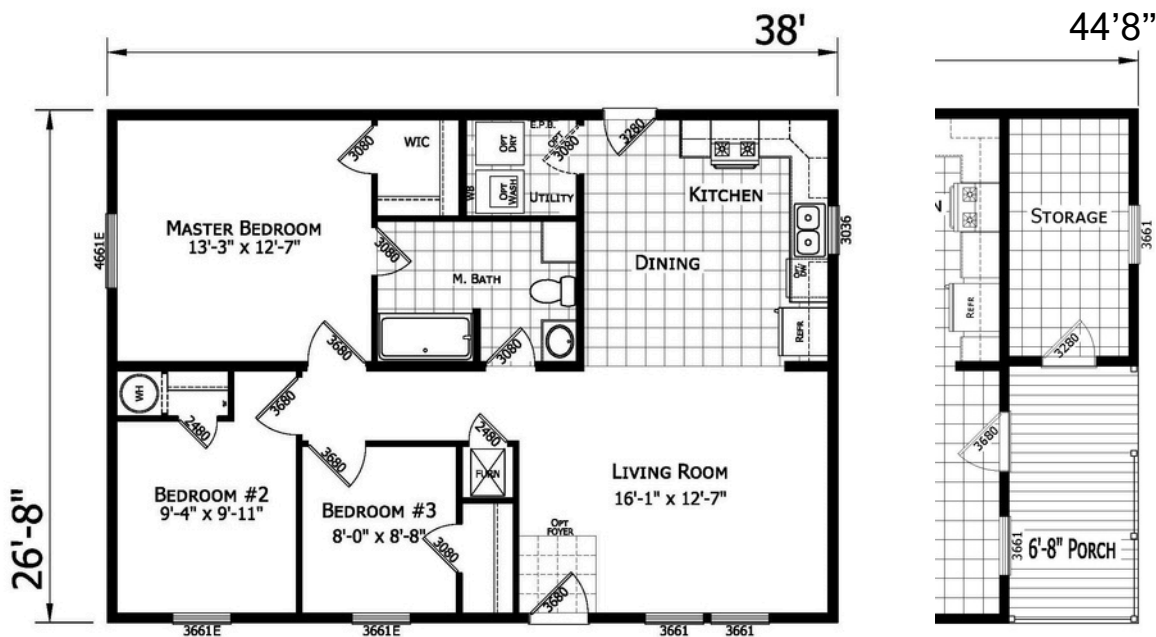
A23601 | 2 Bed-1 Bath 960 Sq. Ft.



A23603 | 2 Bed-1 Bath 960 Sq. Ft.

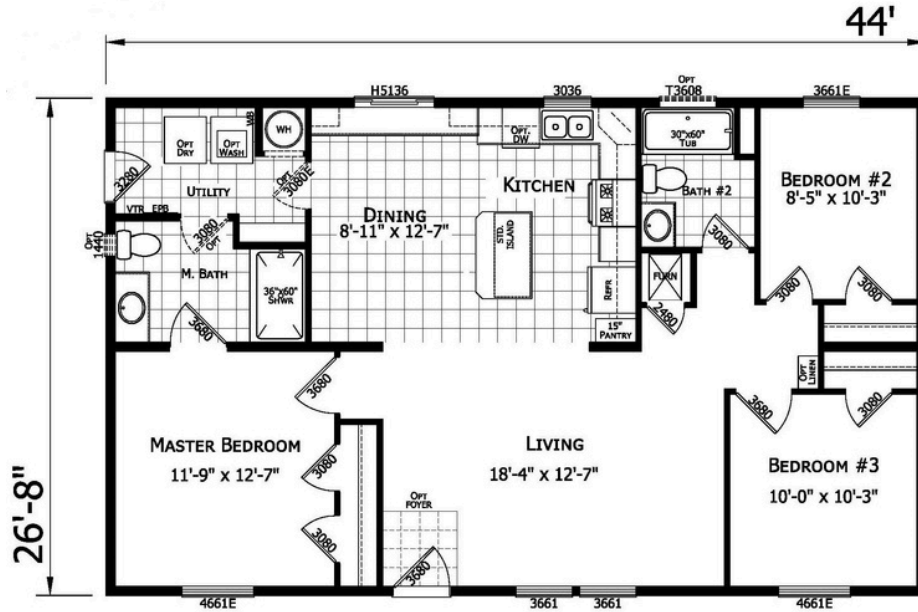


A23801 | 3 Bed-1 Bath 1013 Sq. Ft.

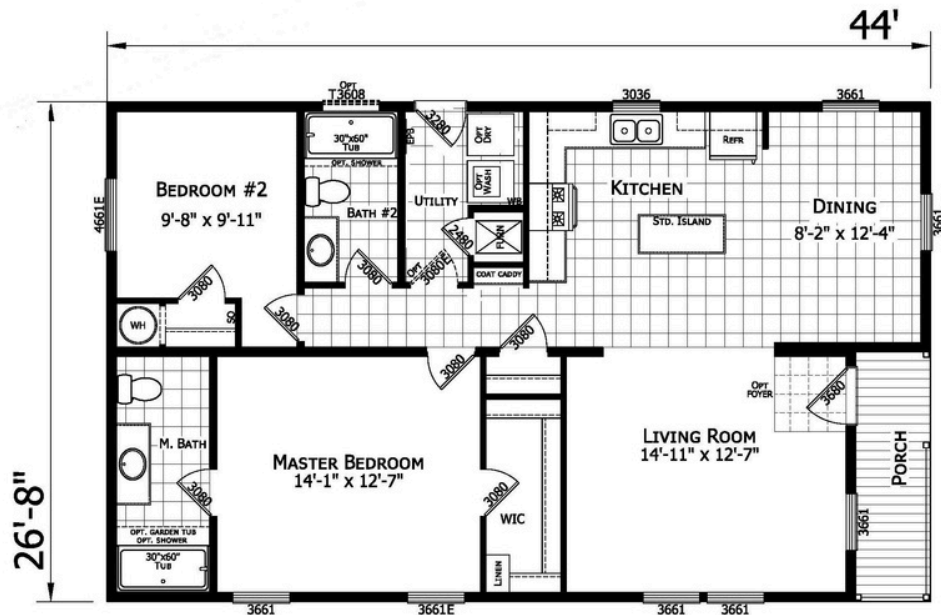




A24402 | 3 Bed-2 Bath 1173 Sq. Ft. Display Home - Kinzers PA



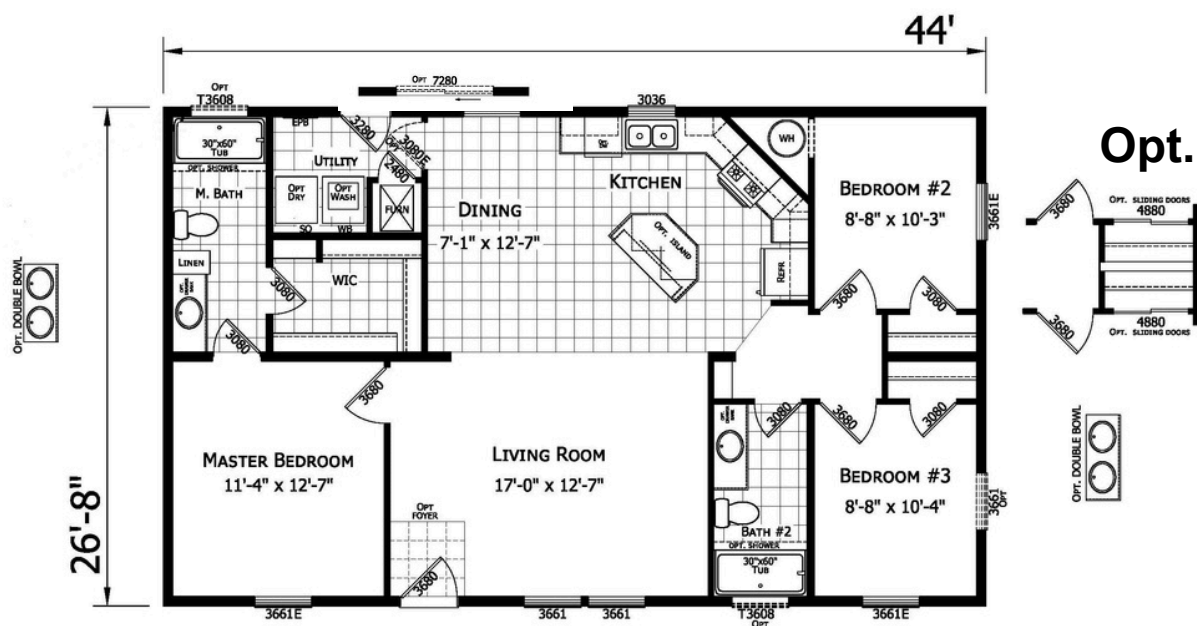
A24404 | 2 Bed-2 Bath 1173 Sq. Ft.

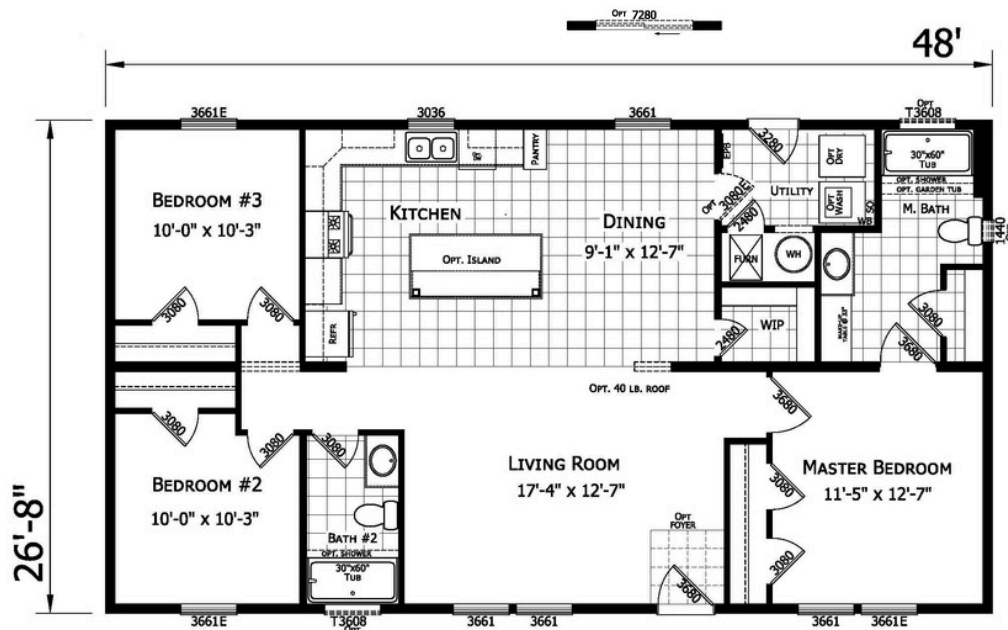


A24405 | 3 Bed-2 Bath 1173 Sq. Ft.



A24407 | 3 Bed-2 Bath 1173 Sq. Ft.

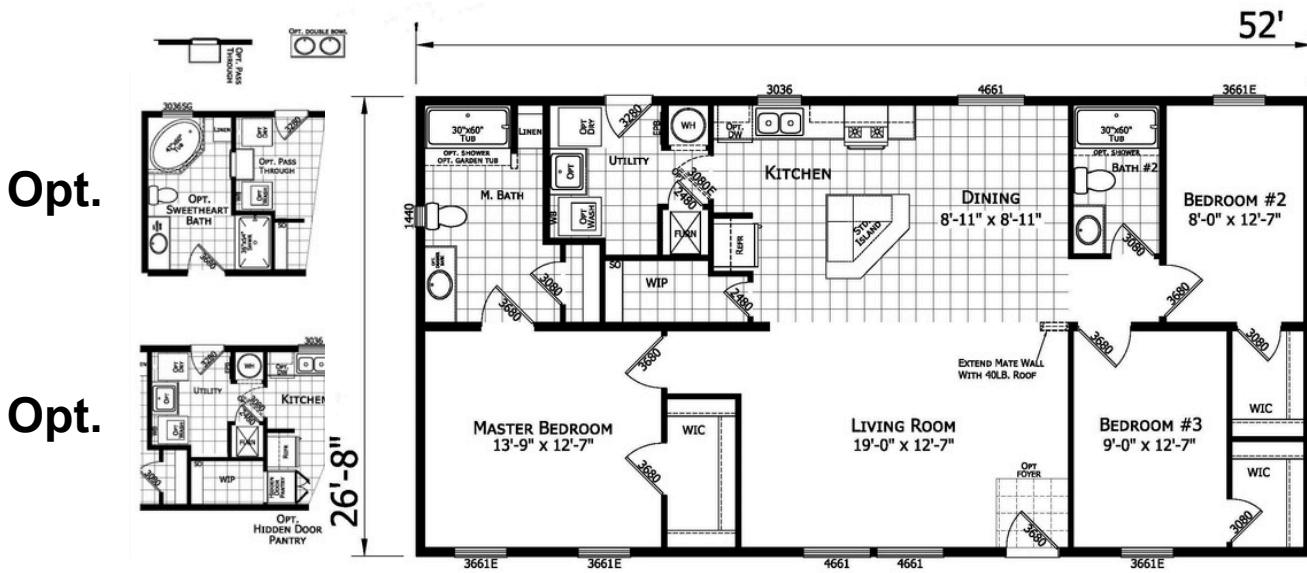


[illegible]

A44827 | 3 Bed-2 Bath 1280 Sq. Ft.

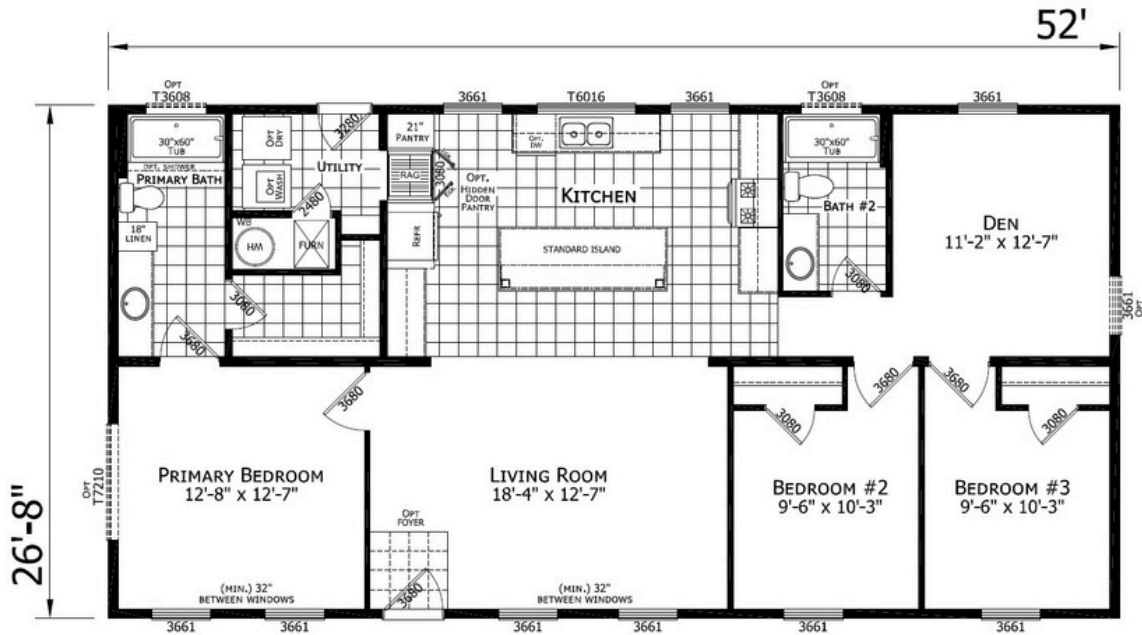


A25201 | 3 Bed-2 Bath 1387 Sq. Ft.

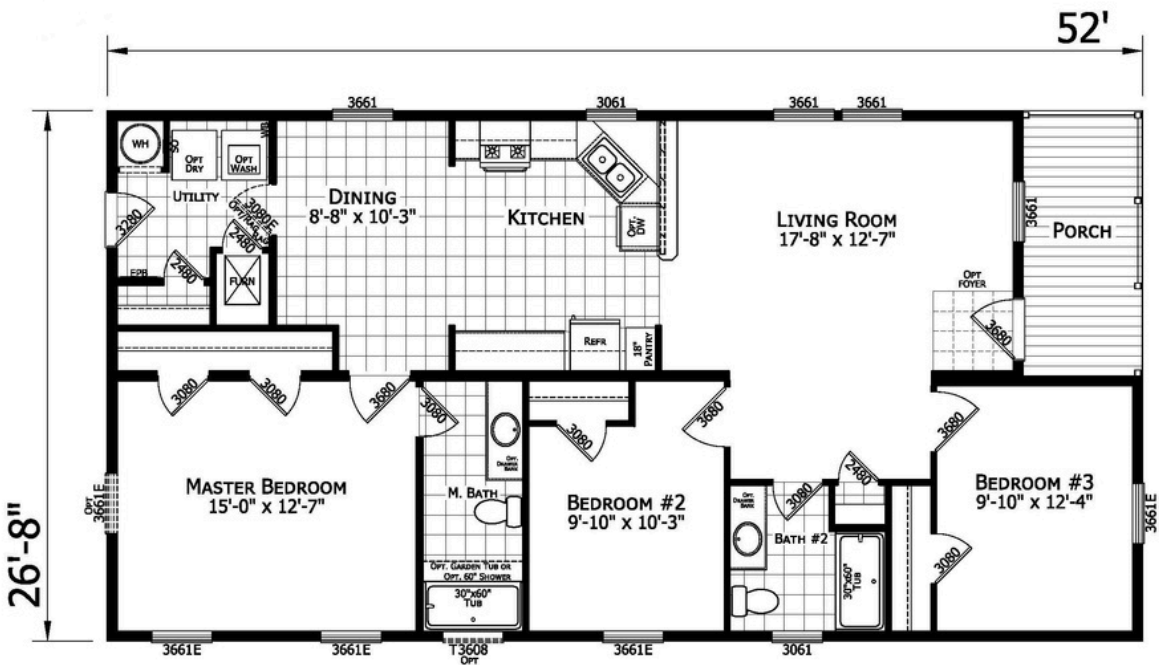


2852H32096

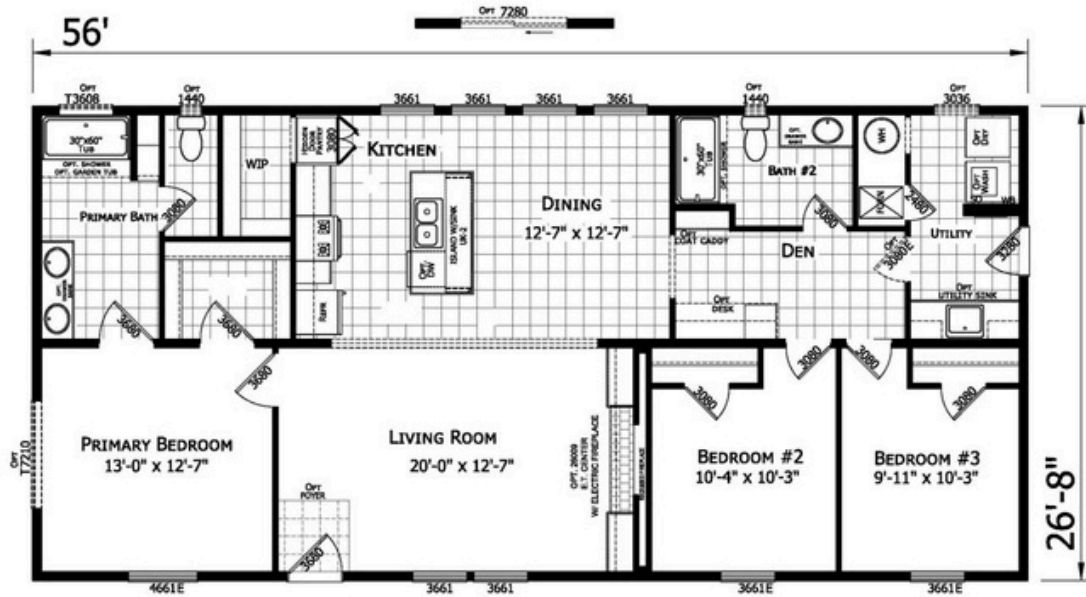
A25212 | 3 Bed-2 Bath 1387 Sq. Ft.



A25256 | 3 Bed-2 Bath 1387 Sq. Ft.



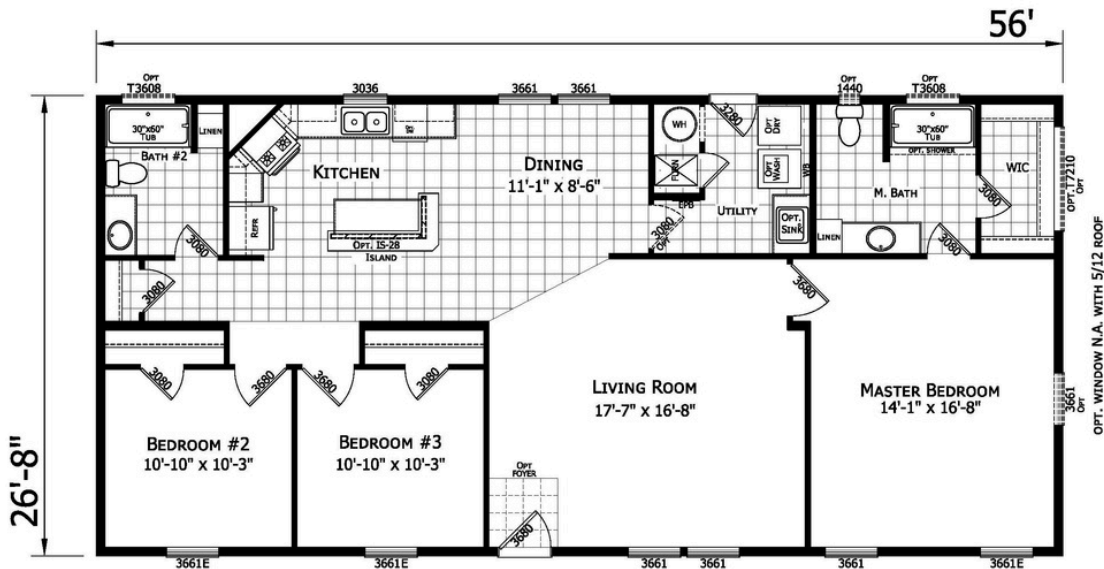
A2856H32444 | 3 Bed-2 Bath 1493 Sq. Ft.



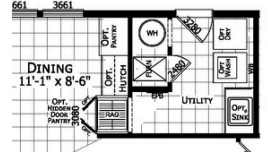


25604 - Family Of Plans

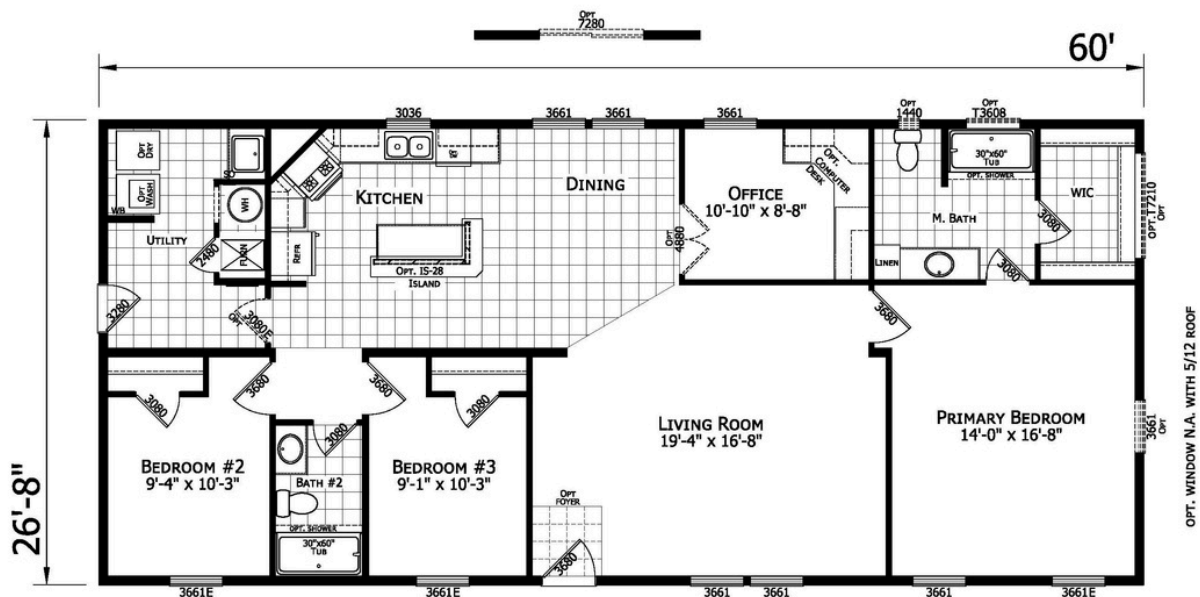
A25604 | 3 Bed-2 Bath 1493 Sq. Ft.



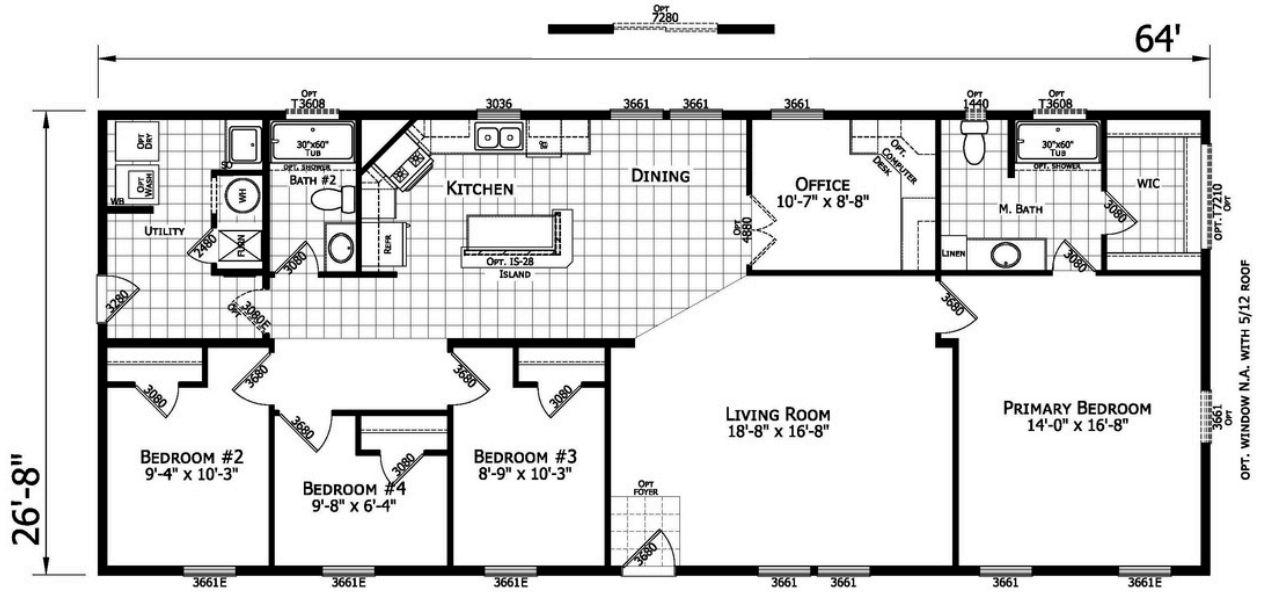
Opt.



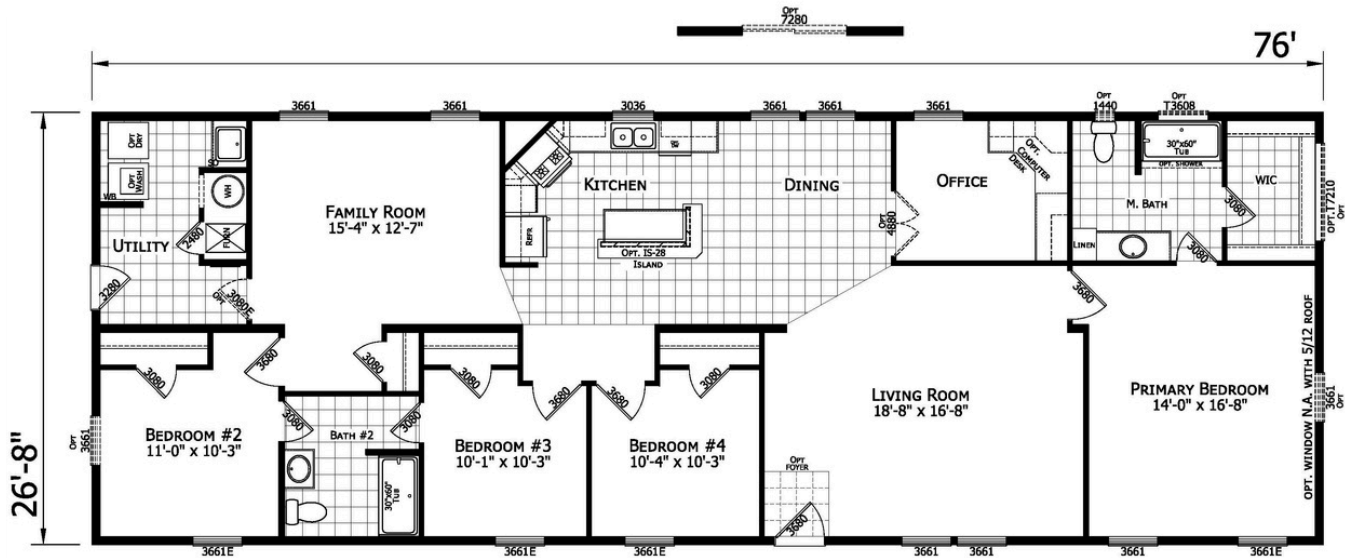
A25604-60 | 3 Bed-2 Bath 1600 Sq. Ft.
Display Home - York PA



A25604-64 | 4 Bed-2 Bath 1707 Sq. Ft.

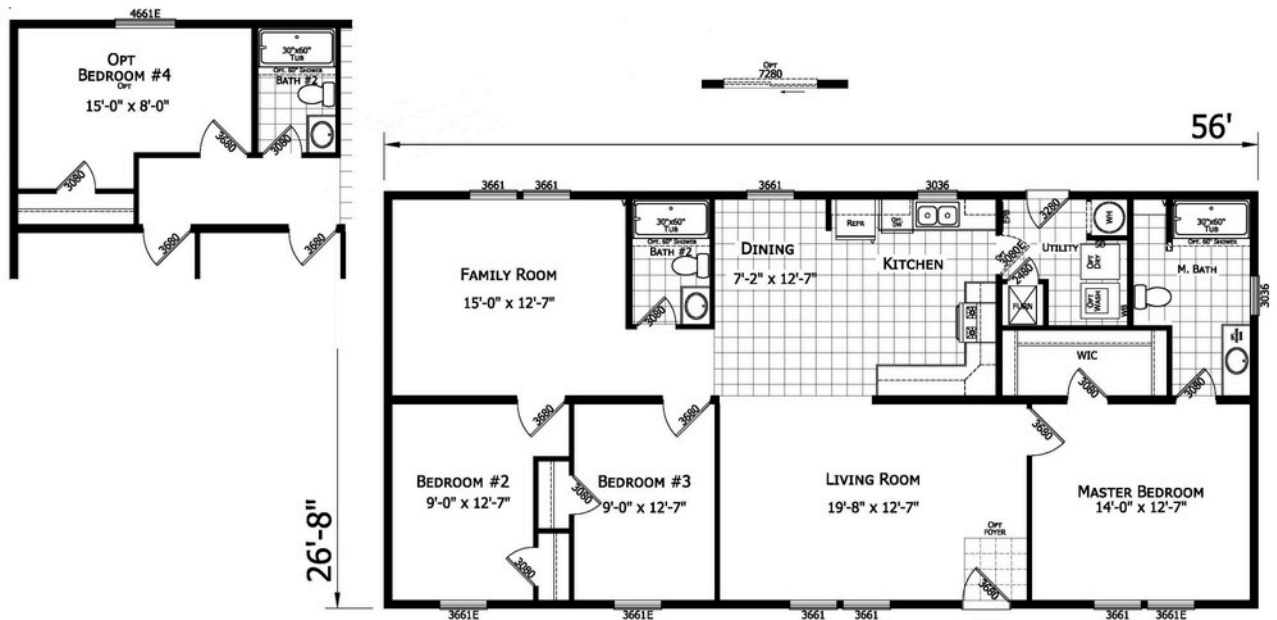


A25604-76 | 4 Bed-2 Bath 2027 Sq. Ft.

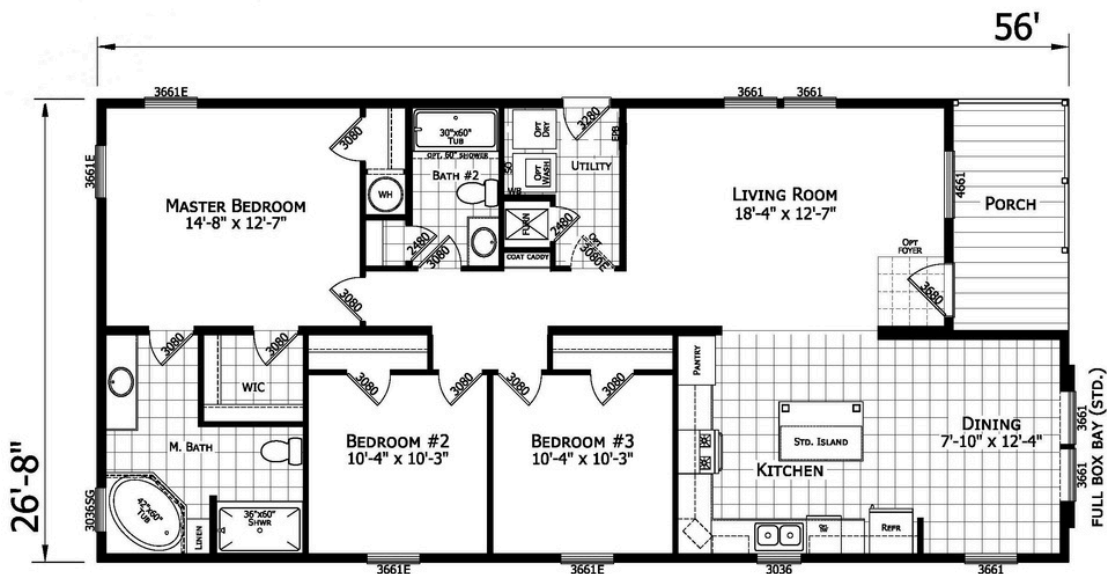


A25601 | 3 Bed-2 Bath 1493 Sq. Ft.

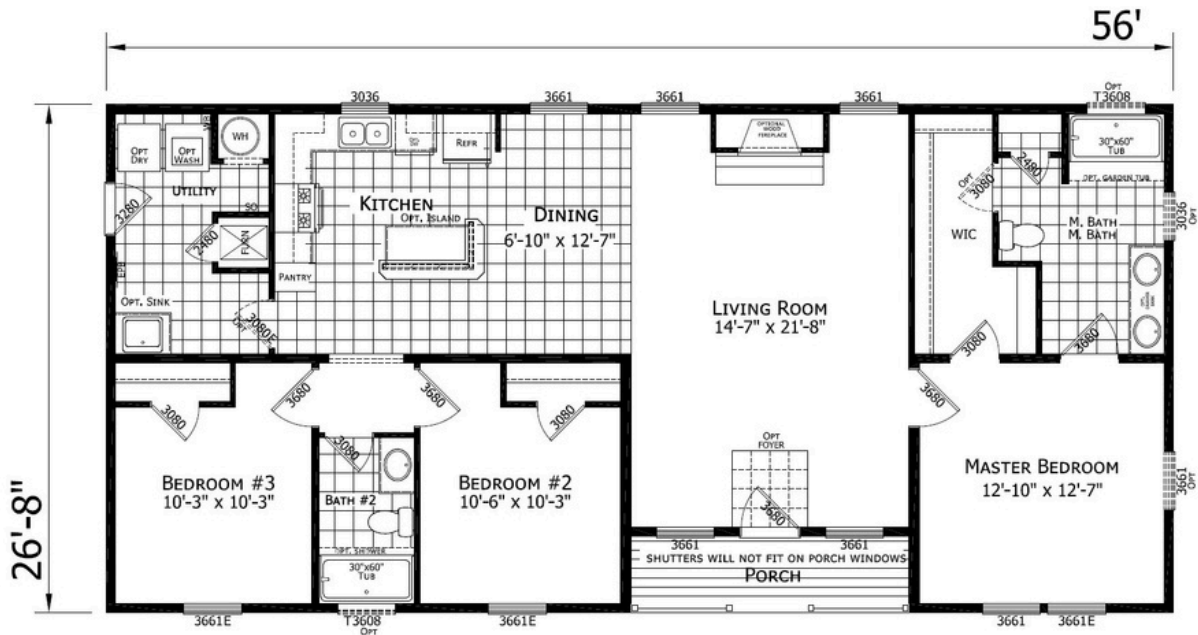
Opt.



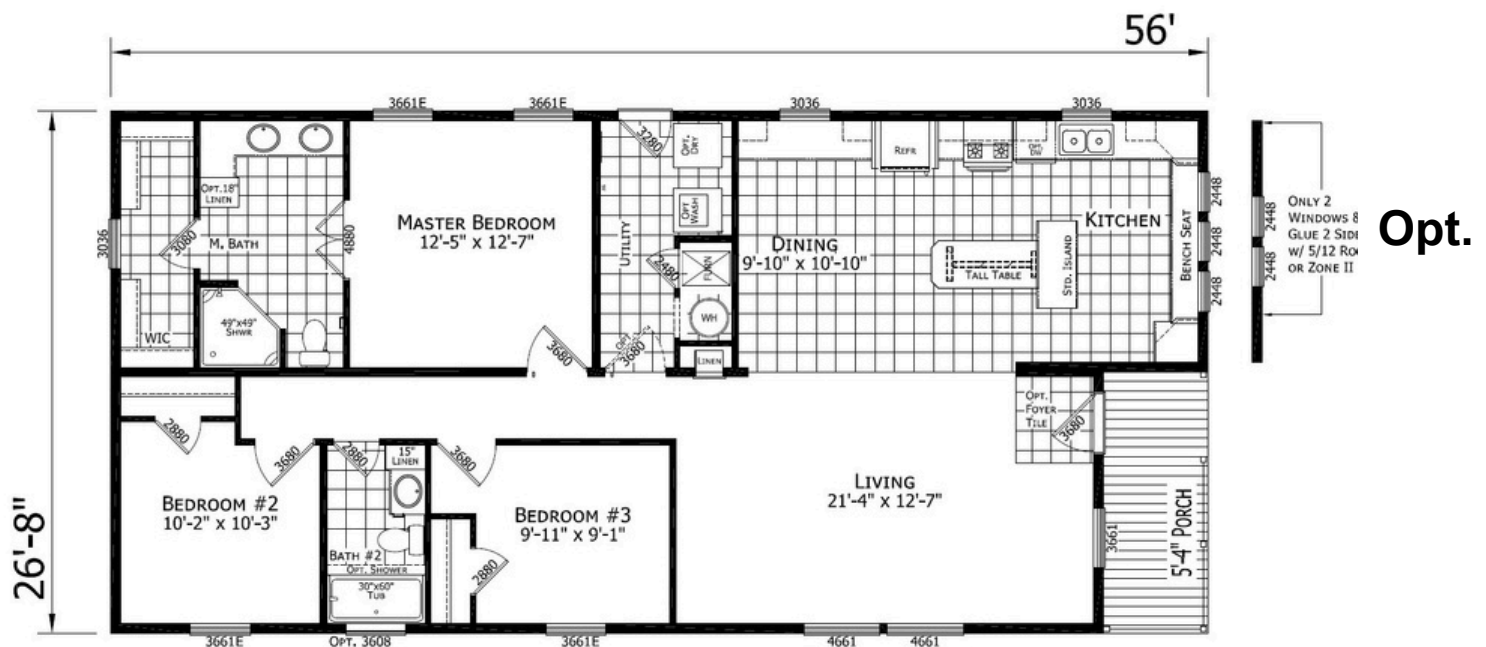
A25605 | 3 Bed-2 Bath 1493 Sq. Ft.



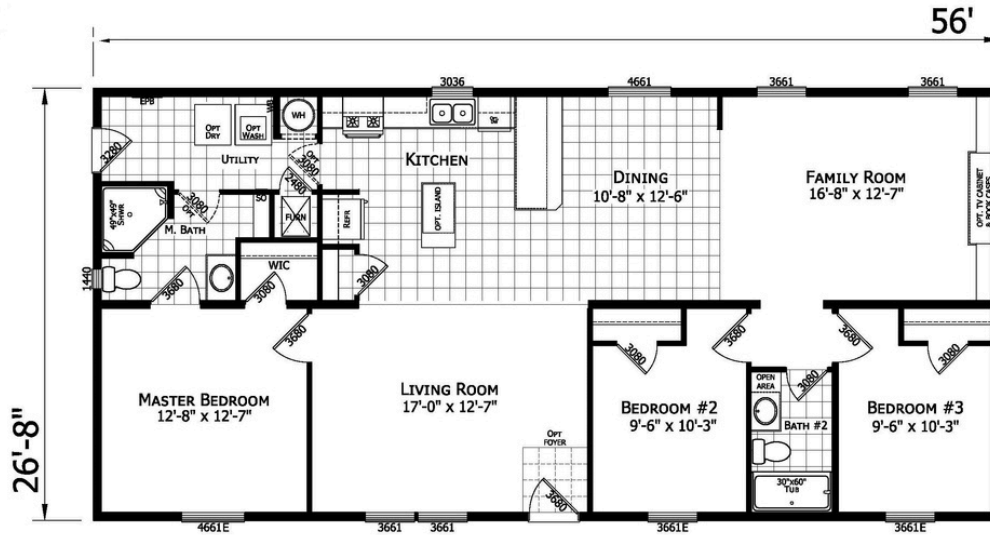
A25606 | 3 Bed-2 Bath 1493 Sq. Ft.



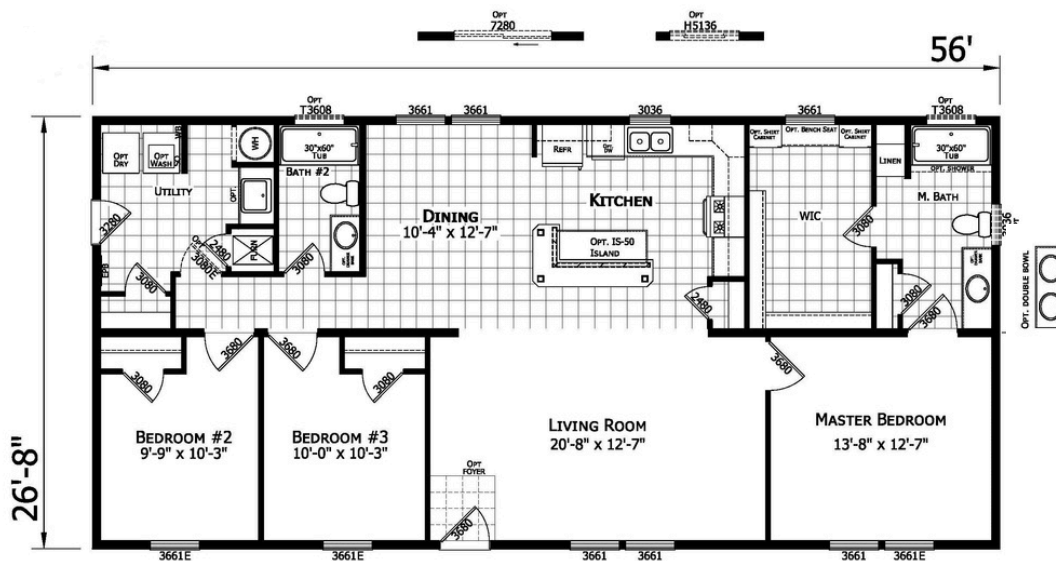
A25607 | 3 Bed-2 Bath 1493 Sq. Ft.



A45633 | 3 Bed-2 Bath 1493 Sq. Ft.

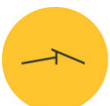


A25612 | 3 Bed-2 Bath 1493 Sq. Ft. Display Home - York PA



Opt.

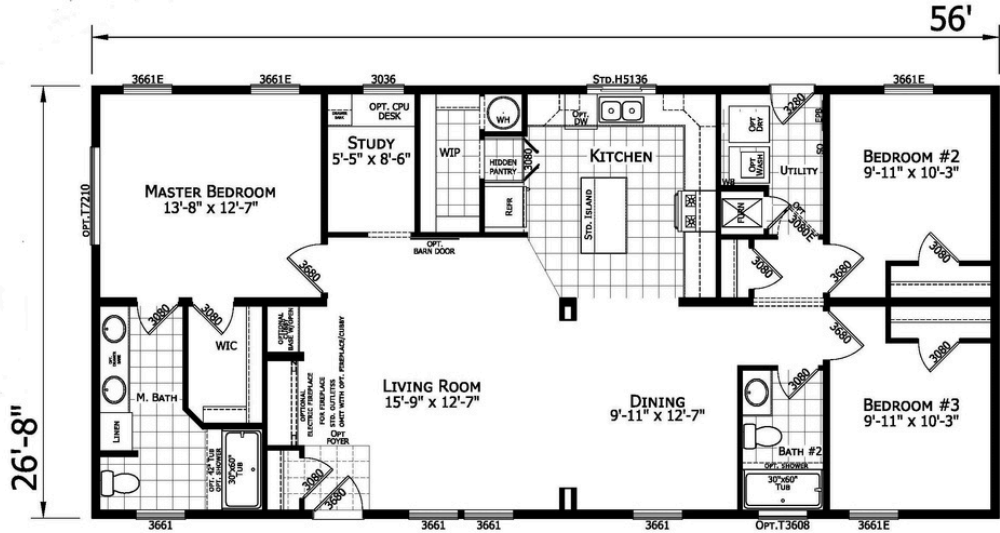
SHOWER, PANTRY AND ENT. CTR



SUPERIOR
HOMES

A25613 | 3 Bed-2 Bath 1493 Sq. Ft.

Opt.

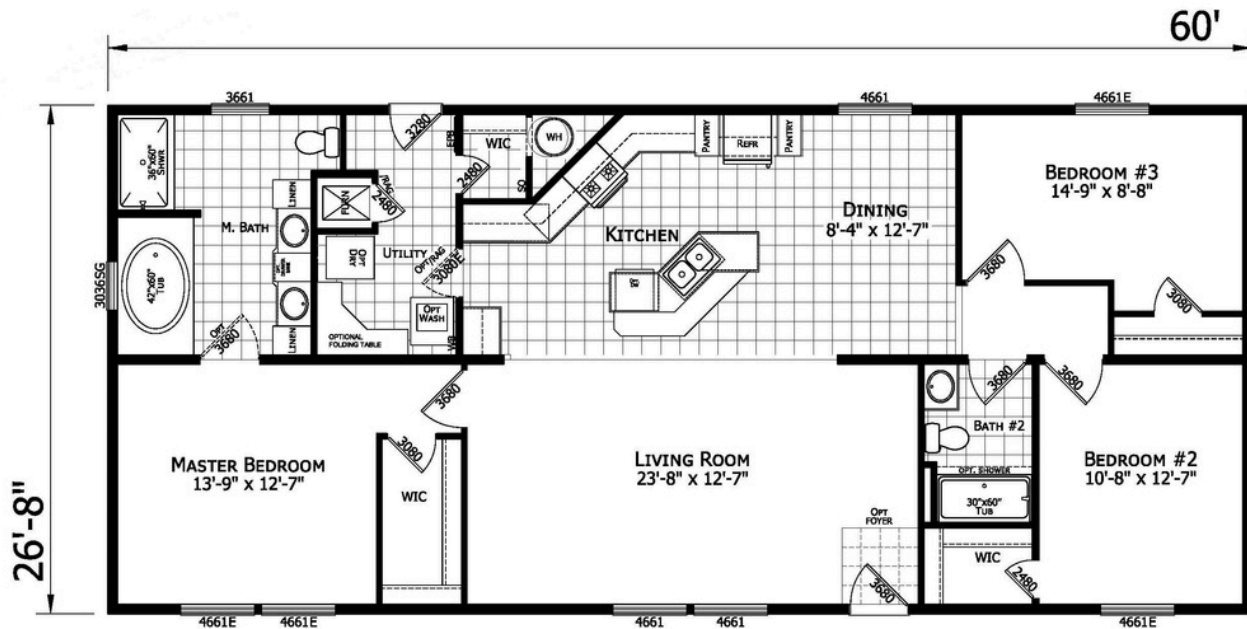


A26009 | 3 Bed-2 Bath 1600 Sq. Ft.
Display Home - Kinzers PA

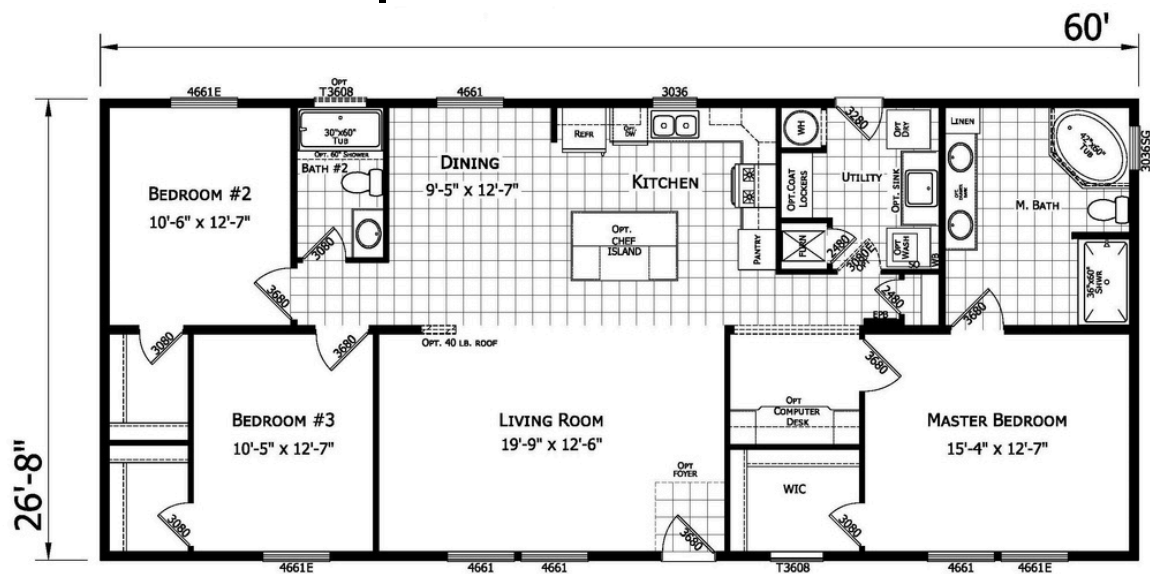
Opt.



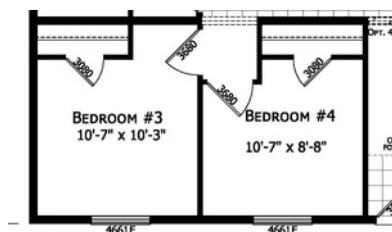
A46029 | 3 Bed-2 Bath 1600 Sq. Ft.



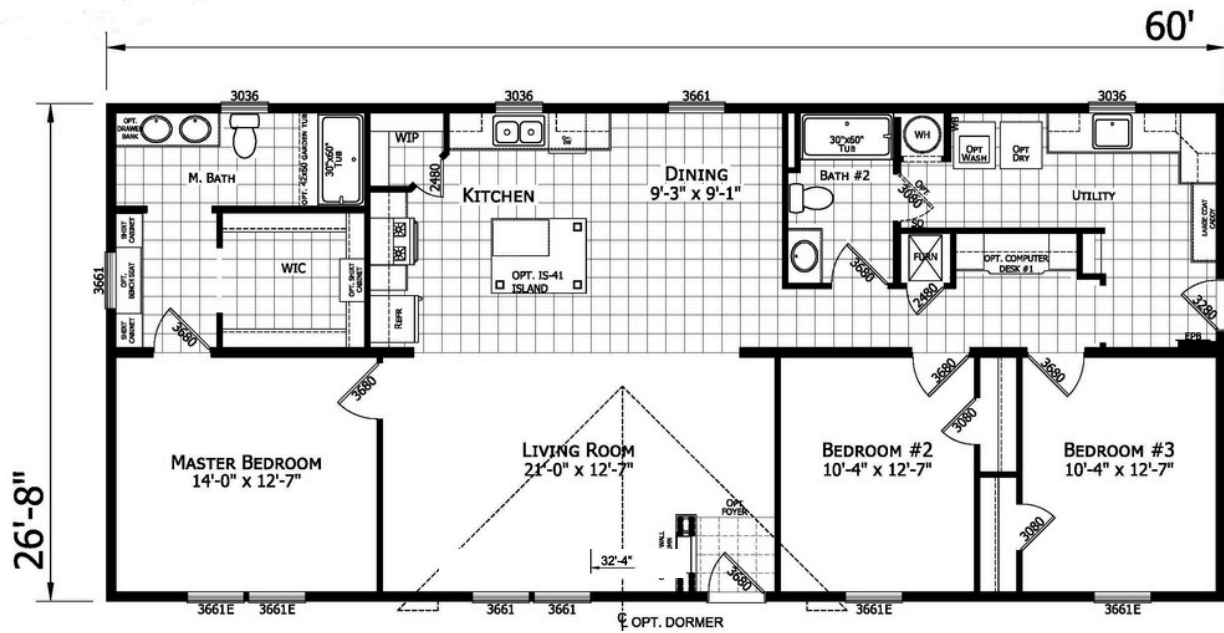
A46026 | 3 Bed-2 Bath 1600 Sq. Ft.



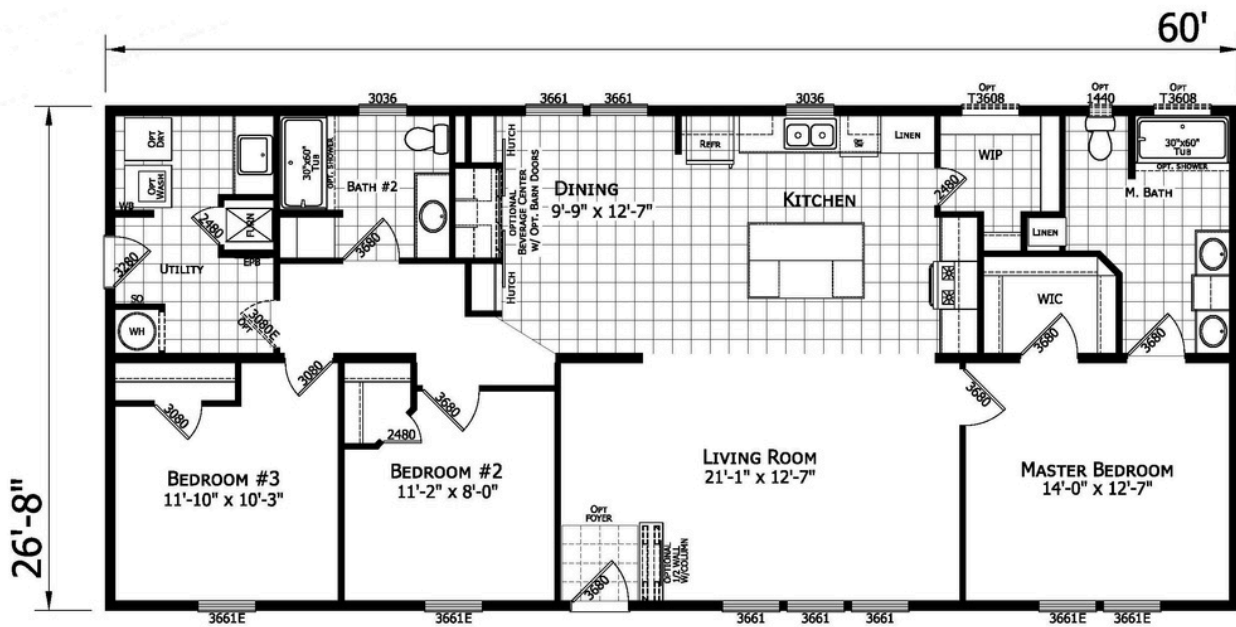
Opt.



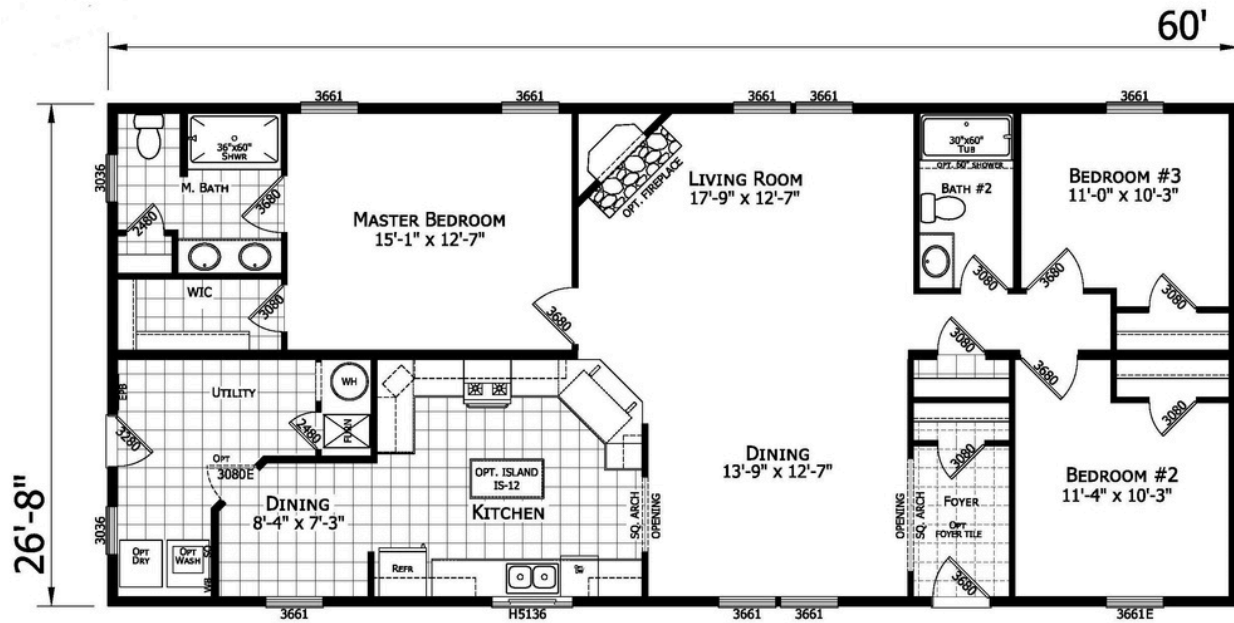
A46030 | 3 Bed-2 Bath 1600 Sq. Ft.



A46033 | 3 Bed-2 Bath 1600 Sq. Ft.



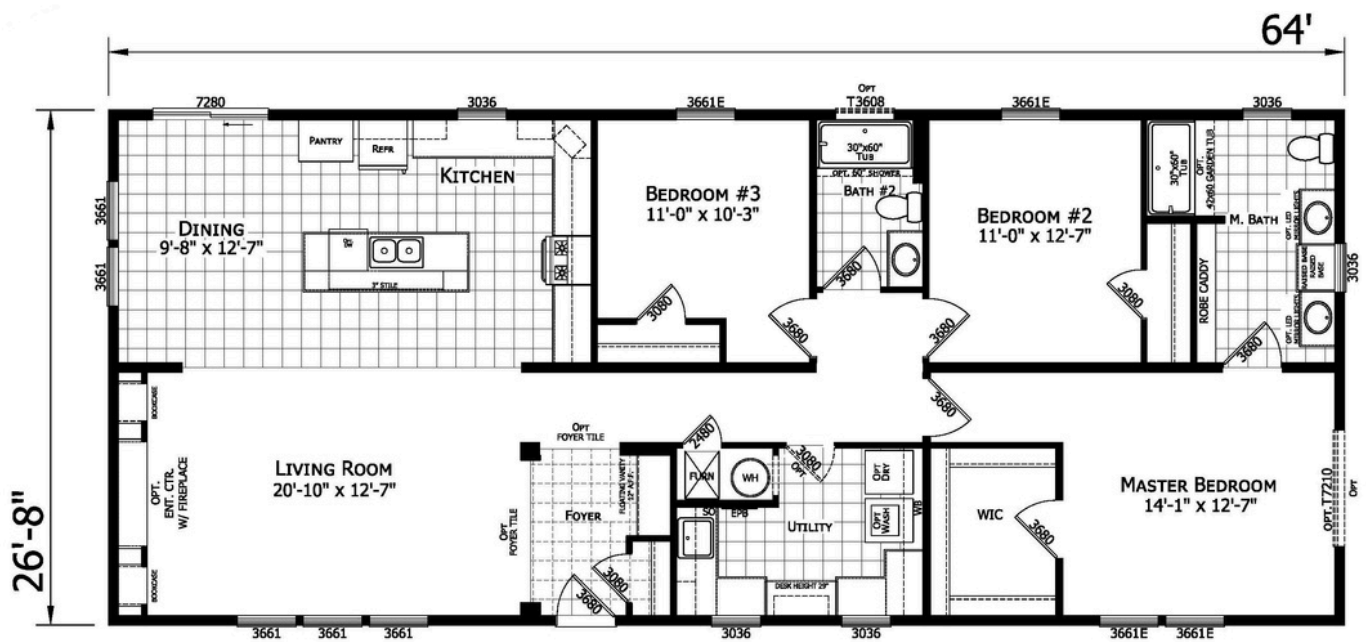
A76050 | 3 Bed-2 Bath 1600 Sq. Ft.



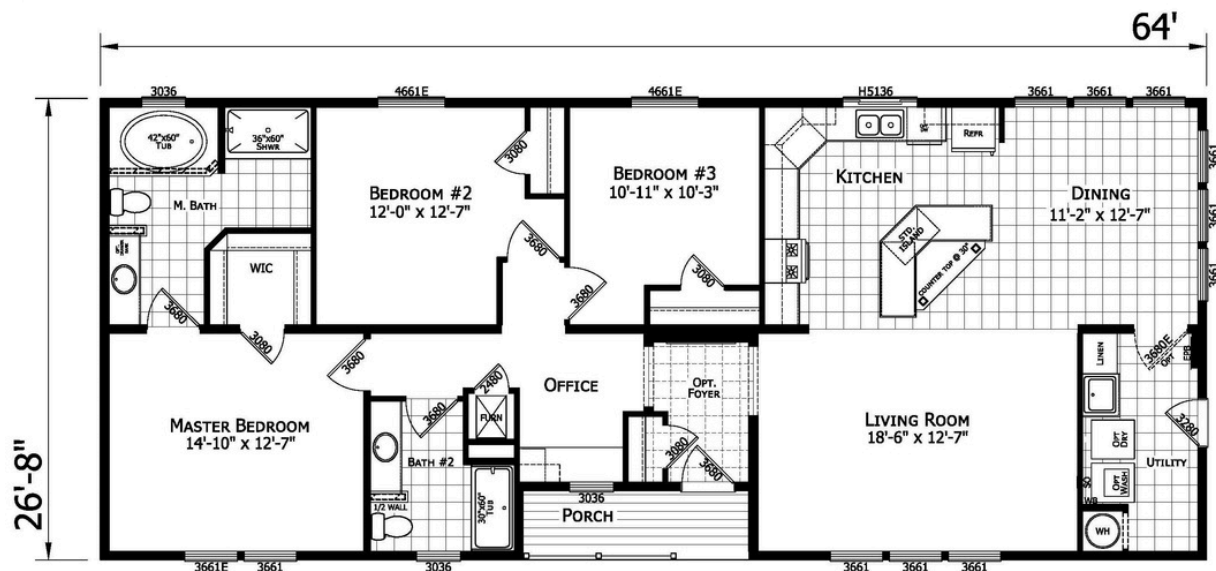
A26401 | 3 Bed-2 Bath 1707 Sq. Ft.



A26404 | 3 Bed-2 Bath 1707 Sq. Ft.



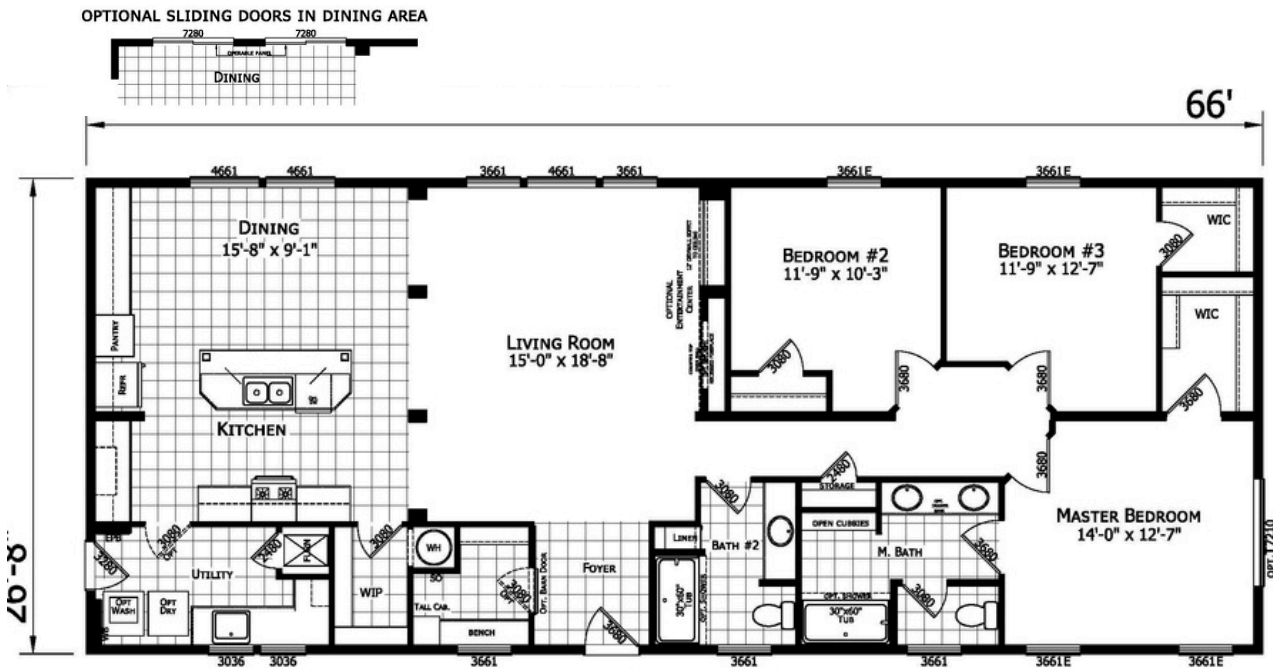
A76450 | 3 Bed-2 Bath 1707 Sq. Ft.



2864H32258

A46653

3 Bed-2 Bath 1760 Sq. Ft.



ELEVATION OPTIONS



3/12 DORMER



DOUBLE EAVE 3/12 DORMER



DECO DORMER #5



DOUBLE EAVE 3/12 DORMER WITH BOX BAY AND DECO DORMER #5



3/12 SMALL DORMER



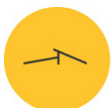
5/12 ROOF WITH SHIP LOOSE DORMER



FULL PORCH ON GABLE END



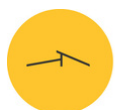
HALF PORCH WITH EYEBROW AND EXTENDED EAVE



ELEVATION OPTIONS

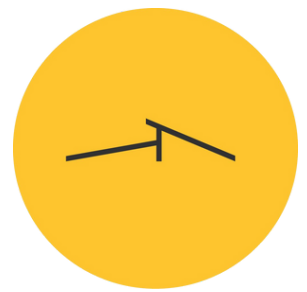


4/12 Split Roof - Limited Floor Plan Designs Only



SUPERIOR
H O M E S

NORTHWOOD STANDARDS



CONSTRUCTION

- 2x6 Floor Joist 16" O.C
- 2x6 Side Walls 16" O.C
- 20 lb. Roof Load 24" O.C
- 8' Sidewalls with Nominal 3/12 Roof
- O.S.B Exterior Sheathing
- Flat Stomped Textured Ceiling
- Vinyl Covered Drywall

EXTERIOR

- Double 4.5" Dutch Lap Vinyl Siding
- Raised Panel Shutters - Front Side Only
- Architectural Shingles with Ice Guard
- Ridge Vent
- Soffit / Fascia / Drip Edge

ELECTRIC

- 100 AMP Electric Service Exhaust Fan with Can Light in Bathrooms LED Can Light at Kitchen Sink LED Can Light in Dining Room LED Can Light in Utility Room LED Can Light at Hallway LED Can Light in Master Bath over Sink LED Can Light in Hall Bath over Sink 4 LED Can Lights in Living Room 4 LED Can Lights in Kitchen 2 LED Can Lights in Each Bedroom 2 Exterior Receptacles - GFI Exterior Lights at Each Exterior Door Wire & Vent For Electric Dryer Combo Smoke / Carbon Dioxide Per Code Heat Tape Receptacle
-
-

BATHROOMS

- GFI Receptacle(s)
- 60" 1 Piece Fiberglass Tub/Shower
- Single Lever Faucet(s)
- 36" Vanity Height with Porcelain Sinks
- Mirror at Vanity with No Frame
- Laminate Countertop, Backsplash & Edge
- Elongated Porcelain Toilet
- Towel Bar & Tissue Holders

KITCHEN

- Single Lever Faucet
- Stainless Steel Kitchen Faucet
- 18 Cu Ft Refrigerator
- Self Clean Gas Range
- Power Vent Range Hood + Light
- GFI Receptacle
- Laminate Countertop, Backsplash, & Edge
- Wood Shaker Style Cabinet Doors
- Residential Drawer Guides
- Fixed Overhead Shelf
- 30" Overhead Cabinets with Cove Molding
- 4 Drawer Bank
- Shelf Over Fridge
- Soft Close Cabinet Doors

PLUMBING & HEATING

- Plumbing For Washer
- In-Line Heat Ducts
- High Efficiency Gas Furnace
- 30 - Gallon Electric Water Heater
- Whole House Shut Off Valve and Each Fixture

MISCELLANEOUS

- Carpet in Living Areas, Bedrooms, & Hallway
- Vinyl at Wet Areas, Bathroom, Kitchen, Ect 3
- Panel White Interior Doors Vinyl Mini Blinds at Windows Low E Windows with Grids R-11
- Floor Insulation R-19 Sidewall Insulation R-22 Roof Insulation 4 Lite Fiberglass Front Door with Deadbolt 9-Lite Fiberglass Rear Door with Deadbolt
-
-

COLOR SELECTION

- Exterior - Siding, Shingles, & Shutters
- Interior - Cabinets, Flooring, & Countertops,
- Walls - Vinyl Wall Color Choices

Due to continuous product development and improvement, prices, specifications, and materials are subject to change without notice or obligation